





# Briefing Outline

- VA CFM Overview
- Major Construction
- Minor Construction
- Design Build Utilization
- VAFM Transformation



# CFM Overview

- CFM supports VA through the execution of the Major Construction and Real Property Programs
  - Planning
  - Design
  - Project Management
  - Construction
  - Leasing
  - Land Acquisition
  - Design Standards and Construction Specifications



# VA Facilities Inventory

- 5,500 Buildings
- 1,400 Leases
- 163,000,000 SF
- 34,000 Land acres
- Average age approaching 60 years



# Major Construction

- Projects with a cost greater than \$10 Million
- Requires a line item appropriation by Congress
- Also requires a specific authorizing legislation for medical projects
- Typically designed by an Architectural/Engineering Firm and constructed by a general contractor selected based on a combination of quality and price

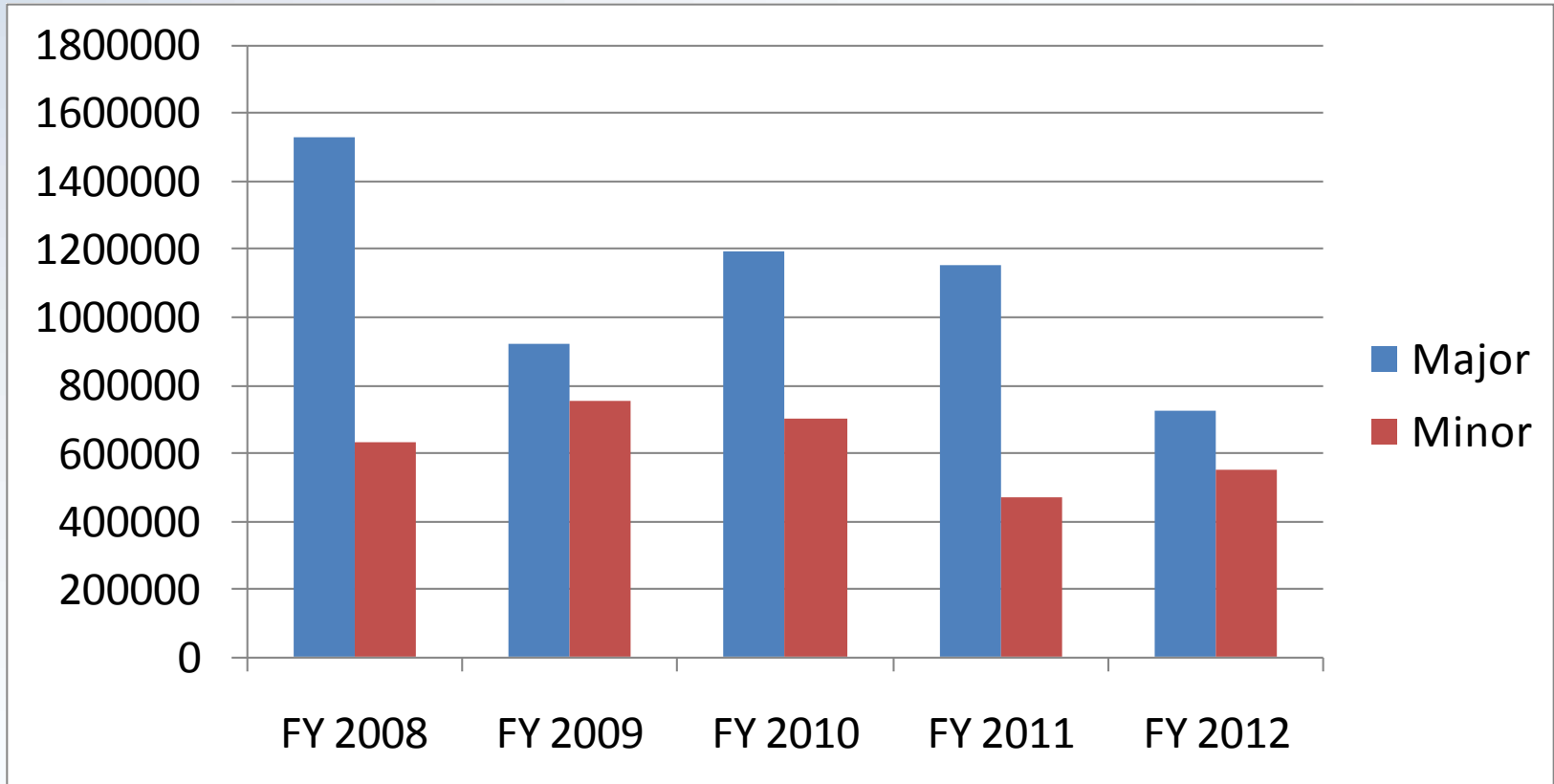


# Minor Construction

- Projects with a cost less than \$10 Million
- Does not requires a line item appropriation by Congress
- Typically designed by an Architectural/Engineering Firm and constructed by a general contractor typically Design-Bid-Build selected based on a combination of quality and price



# Construction Funding (\$000's)





# FY 2011 Major Project Funding

▪ New Orleans	New Hospital	\$310,000,000
▪ Denver	New Hospital	\$450,700,000
▪ Palo Alto, CA	PRC/OP Care	\$30,000,000
▪ Alameda Point, CA	OPC/Cemetery	\$17,332,000
▪ Omaha	New Hospital	\$56,000,000
▪ Indiantown Gap, Pa	Cemetery Expansion	\$23,500,000
▪ Los Angeles	Cemetery Expansion	\$27,600,000
▪ Tahoma, WA	Cemetery Expansion	\$25,800,000





# FY 2012 Major Construction Funding

▪ New Orleans	New Hospital	\$60,000,000
▪ Denver	New Hospital	\$42,000,000
▪ San Juan	Seismic Corrections	\$100,720,000
▪ St. Louis	Medical/Cemetery	\$80,000,000
▪ Palo Alto	PRC/OP Care	\$75,900,000
▪ Bay Pines, FL	VAMC Improvements	\$43,970,000
▪ Seattle	Seismic	\$47,500,000
▪ Reno	Seismic (D)	\$21,380,000
▪ West Los Angeles	New D & T Center (D)	\$50,790,000
▪ San Francisco	Seismic (D)	\$22,480,000
▪ Honolulu	Cemetery	\$23,700,000



# FY 2011 Minor Projects

- Altoona PA Expand & Improve Behavioral Health Clinic
- Erie PA Build Parking Garage
- Erie PA Replace Community Living Center
- Lebanon PA Build Transitional Rehabilitation House
- Martinsburg WV Build Women's Wellness Center
- Philadelphia PA Expand Main Entrance Building 1
- Wilkes-Barre PA Build Community Living Center, Phase 1
- Wilmington DE Build New Medical Center Entrances (Community Living Center and SW7)
- Wilmington DE Build Homeless Domiciliary Residential Rehabilitation Treatment Program Building
  
- Program totals about \$66 million



# Design Build Utilization

- Almost Exclusive to Major Program
- Primarily a Time Saver
  - Can reduce AE selection process
  - Reduces procurement time
  
- Two Varieties
  - D/B contract after SD
  - D/B contract after DD



# VAFM Transformation

- One of the original 13 greatest challenges
- Predicated on the belief that significant improvements can be made based on consistency and best practice utilization across VA's Facilities Management enterprise
- Planning in FY 2010
- Implementation in FY 2011-2012



# VAFM Targeted Outcomes

- Strategy-Driven Investment
  - Strategic Capital Investment Planning
  
- Maximum System Performance
  - Enterprise Facilities Management System
  
- Required Technical Capability
  - Critical Mass of Life-cycle Facilities Engineering Competency and Capacity
  
- Programmatic Investment
  - Budgeted Resources Aligned with Strategic Objectives Performance Targets



# VAFM Concept

- Integration of All VA Facilities Management Components and Capabilities
  - Full Spectrum of Facilities Life-cycle
  - Strategic to Operational
  - Maintains Local Control
- Designed, Implemented, and Operationalized in 3 Years
- Establish VA Facilities Management as an integrated enterprise operation throughout the Department to ensure quality facilities for all Veterans



# Opportunity Abounds!

## Teamwork is Critical

### VA Customers Define Success

